



Safeguarding and promoting the welfare of children is everyone's responsibility.

IMPACT EDUCATION MULTI-ACADEMY TRUST

Mission

Impact Education Multi Academy Trust is on a mission to improve the life chances of children and young people and improve social mobility for the disadvantaged.

Vision

*A Trust **where hearts and minds connect**; values-driven partners who work collaboratively to ensure education impacts positively on students, families, communities and staff.*

Impact is a values driven organisation with the belief that collaborative leadership and strong partnership development can lead to significant positive impact on the quality of education. We believe that this can happen without schools losing their own identity.

We are an organisation where Hearts and Minds Connect and have developed a culture and ethos that ensures children and young people achieve the very best outcomes whilst developing a life-long love of learning. We have high expectations academically but we also place a great emphasis on positive attitudes to learning and building effective relationships with others. Our children and young people are encouraged to develop themselves as fully rounded, emotionally intelligent individuals. Our people are highly valued and encouraged to take advantage of the wealth of developmental opportunities across the Trust.

The following policy must be read in conjunction with the *Staff Policy Handbook*

15th June 2020

of the IMPACT Education Multi-Academy Trust.

This policy applies to all adults, including volunteers, working in or on behalf of the school.

The following policies can be found in the *Staff Policy Handbook for the IMPACT Education Multi-Academy Trust*:

Recruitment Policy. P.6-19.

Staff code of conduct. P.36-41.

Disciplinary Procedure. Pages 42-51.

Anti-Harassment and Bullying Policy. P.69-71.

Social Media Policy. P.84-86.

Whistleblowing. P.87-92.

GDPR. P.192-208.

CCTV and Monitoring. P.209-217.

*Safeguarding and promoting the welfare
of children is everyone's responsibility.*

Safeguarding- Child Protection Policy and Procedure.

September 2020

Old Bank Academy



Date of Issue: September 2020

Status: Statutory

Approved by LGB:

Andrew Eastwood

Date:

September
2020

Last reviewed on:

September 2020

Next review due by:

September 2021



**Safeguarding and promoting the welfare
of children is everyone’s responsibility.**

Contents.

	Impact Education Multi-Academy Trust	1.
	School Name sheet.	2.
	Contents Page	3 & 4
	At Old Bank Academy we believe that as the current <i>Keeping Children Safe in Education</i> (KCSIE) states	5.
	School Contacts	6.
1.	Legislation and statutory guidance.	7.
2.	Definitions	8.
3.	Children	8
4.	Equality statement	8.
5.	Roles and Responsibilities	9
5.1.	All staff	9
5.2.	The Designated Safeguarding Lead	10
5.3.	The Local Governing Board.	11
5.4.	The Headteacher	11
6.	Confidentiality	12
7.	Recognising abuse and taking action	13
7.1.	If a child is suffering or likely to suffer harm, or in immediate danger	13
7.2.	If a child makes a disclosure to you	14
7.3.	If you discover that FGM has taken place or a pupil is at risk of FGM	14
7.4.	If you have concerns about a child (as opposed to believing a child is suffering or likely to suffer from harm, or is in immediate danger)	15
	Early Help	15
	Referral	15
7.5.	If you have concerns about extremism	16
	Figure 1. procedure if you have concerns about a child’s welfare (as opposed to believing a child is suffering or likely to suffer from harm, or in immediate danger)	17
7.6.	Concerns about a staff member or volunteer	18
7.7.	Allegations of abuse made against other pupils	18
7.8.	Sexting	19
8.	Notifying Parents.	21
9.	Pupils with Special Educational Needs and disabilities.	22
10.	Mobile Phones and Cameras.	22
11.	Complaints and concerns about school safeguarding policies	23
11.1.	Complaints against staff.	23
11.2.	Other Complaints.	23
11.3.	Whistleblowing.	24
12.	Record-keeping.	24
13.	Training.	29
13.1.	All Staff.	
13.2.	The DSL and [deputy/deputies].	
13.3.	Governors	
13.4.	Recruitment-interview panels.	30

Safeguarding and promoting the welfare of children is everyone's responsibility.

13.5.	Staff who have contact with pupils and families.	
14.	Monitoring arrangements	
15.	Links with other policies.	
	Appendix 1: Types of Abuse.	31
	Appendix 2: safer recruitment and DBS checks – policy and procedures	32
	Pupils staying with Host Families.	
	Appendix 3: allegations of abuse made against staff.	
	Appendix 4: Specific safeguarding issues.	33
	Children missing from education.	33
	Child sexual exploitation.	34
	Homelessness.	34
	So-called 'honour-based' violence (including FGM and forced marriage)	35
	FGM	35
	Forced Marriage.	36
	Preventing Radicalisation	37
	Domestic Abuse	38
	Checking the identity and suitability of visitors	39
	Non-collection of children.	39
	Missing Pupils.	40
	KCSIE 2020: Annex A: Further safeguarding information Pages 82-96 Annex B: Role of the designated safeguarding lead Pages 97-101 Annex C: Online safety Pages 102-106 Annex E: Host families - homestay during exchange visits Pages 108-110 Annex F: Statutory guidance - Regulated activity (children) - Supervision of activity with children which is regulated activity when unsupervised Pages 111-113 Annex G: Disclosure and Barring Service checks Pages 114-118.	40

Safeguarding and promoting the welfare of children is everyone's responsibility.

At Old Bank Academy we believe that as the current *Keeping Children Safe in Education* (KCSIE) states (P.5):

1. "Schools and colleges and their staff are an important part of the wider safeguarding system for children. This system is described in statutory guidance Working Together to Safeguard Children.
2. Safeguarding and promoting the welfare of children is **everyone's** responsibility. **Everyone** who comes into contact with children and their families has a role to play. In order to fulfil this responsibility effectively, all practitioners should make sure their approach is child-centred. This means that they should consider, at all times, what is in the **best interests** of the child.
3. No single practitioner can have a full picture of a child's needs and circumstances. If children and families are to receive the right help at the right time, **everyone** who comes into contact with them has a role to play in identifying concerns, sharing information and taking prompt action.
4. Safeguarding and promoting the welfare of children is defined for the purposes of this guidance as:
 - protecting children from maltreatment;
 - preventing impairment of children's mental and physical health or development;
 - ensuring that children grow up in circumstances consistent with the provision of safe and effective care; and
 - taking action to enable all children to have the best outcomes.
5. Children includes everyone under the age of 18.

We believe that therefore:

- Schools play a key role in the prevention of abuse.
- All children have the right to be protected from harm.
- Children need support which matches their individual needs, including those who may have experienced abuse.

Safeguarding and promoting the welfare of children is everyone's responsibility.

School Contacts	
Designated Safeguarding Lead (DSL)	Judy Wood
Deputy Designated Safeguarding Lead (Deputy DSL)	Amy Taylor Susan Bird
Any other staff trained to DSL level	Barbara Cooper
Designated Practitioner with responsibility for Safeguarding in Early Years	Judy Wood
Deputy Designated Practitioner with responsibility for Safeguarding in Early Years If applicable	Amy Taylor
Designated Looked after Children Lead	Judy Wood
Well-being Lead	Barbara Cooper
Prevent Lead	Amy Taylor
Headteacher/Principal	Judy Wood
Governor/Trustee Contacts	
CEO	Mick Kay
Chair of Governors	Andrew Eastwood
Governor responsible for Safeguarding	Andrew Eastwood
Trustee responsible for Safeguarding	Pat McDermott
Local Authority Contacts/ Safeguarding Partners	
Our school follows the safeguarding protocols and procedures of our Safeguarding Partners	
NB. Check where all pupils reside as you may need details of more than one authority, board	
Local safeguarding children board	Kirklees
Local authority children's social care referral team	Kirklees Duty & Advice
The Designated Officer for child protection (sometimes referred to as the LADO)	Sandra Shaw
Local authority Prevent Lead	Daniel.Dearnley@kirklees.gov.uk Tel: 07976 497 849
Local authority's out of hours social care contact numbers	01484414960
Police	
Local Police Emergency	999
Local Police non-emergency	101
Location of local authority safeguarding and child protection documents in school	
Local authority documents, e.g. thresholds, referral forms and related guidance can be found:	https://www.kirkleessafeguardingchildren.co.uk/
National Contacts	
NSPCC 24/7 Helpline	Tel: 0808 800 5000 Email: help@nspcc.org.uk
NSPCC Text line	88858



Safeguarding and promoting the welfare of children is everyone's responsibility.

Legislation and statutory guidance.

This policy is based on the Department for Education's statutory guidance [https://assets.publishing.service.gov.uk/government/uploads/system/uploads/attachment_data/file/892394/Keeping children safe in education 2020.pdf](https://assets.publishing.service.gov.uk/government/uploads/system/uploads/attachment_data/file/892394/Keeping_children_safe_in_education_2020.pdf) and [Working Together to Safeguard Children \(2018\)](#). We comply with this guidance and the arrangements agreed and published by our 3 local safeguarding partners.

This policy is also based on the following legislation:

Part 3 of the schedule to the [Education \(Independent School Standards\) Regulations 2014](#), which places a duty on academies to safeguard and promote the welfare of pupils at the school.

[The Children Act 1989](#) (and [2004 amendment](#)), which provides a framework for the care and protection of children.

Section 5B(11) of the Female Genital Mutilation Act 2003, as inserted by section 74 of the [Serious Crime Act 2015](#), which places a statutory duty on teachers to report to the police where they discover that female genital mutilation (FGM) appears to have been carried out on a girl under 18.

[Statutory guidance on FGM](#), which sets out responsibilities with regards to safeguarding and supporting girls affected by FGM.

[The Rehabilitation of Offenders Act 1974](#), which outlines when people with criminal convictions can work with children.

Schedule 4 of the [Safeguarding Vulnerable Groups Act 2006](#), which defines what 'regulated activity' is in relation to children.

[Statutory guidance on the Prevent duty](#), which explains schools' duties under the Counterterrorism and Security Act 2015 with respect to protecting people from the risk of radicalisation and extremism.

The [Childcare \(Disqualification\) and Childcare \(Early Years Provision Free of Charge\) \(Extended Entitlement\) \(Amendment\) Regulations 2018](#) (referred to in this policy as the "2018 Childcare Disqualification Regulations") and [Childcare Act 2006](#), which set out who is disqualified from working with children.

This policy also meets requirements relating to safeguarding and welfare in the [statutory framework for the Early Years Foundation Stage](#).



Safeguarding and promoting the welfare of children is everyone's responsibility.

This policy also complies with our funding agreement and articles of association.

Safeguarding and child protection is **everyone's** responsibility. This policy applies to all staff, volunteers and governors in the school and is consistent with the procedures of the 3 safeguarding partners. This information can be found here <https://www.kirkleessafeguardingchildren.co.uk/wp-content/uploads/2019/07/MASA-v8-Final.pdf>

- > **Mel Meggs- Director of Children's Services**
- > **Penny Woodhead- Chief Quality & Nursing Officer Clinical Commissioning Group**
- > **Julie Sykes- Chief Superintendent West Yorkshire Police**

Our policy and procedures also apply to extended school and off-site activities.

2. Definitions:

Safeguarding and promoting the welfare of children means:

- protecting children from maltreatment;
- preventing impairment of children's mental and physical health or development;
- ensuring that children grow up in circumstances consistent with the provision of safe and effective care; and
- taking action to enable all children to have the best outcomes.

Child protection is part of this definition and refers to activities undertaken to prevent children suffering, or being likely to suffer, significant harm.

Abuse is a form of maltreatment of a child and may involve inflicting harm or failing to act to prevent harm. Appendix 1 explains the different types of abuse.

Neglect is a form of abuse and is the persistent failure to meet a child's basic physical and/or psychological needs, likely to result in the serious impairment of the child's health or development. Appendix 1 defines neglect in more detail.

Sexting (also known as youth produced sexual imagery) is the sharing of sexual imagery (photos or videos) by children

Children includes everyone under the age of 18.

Equality statement

Some children have an increased risk of abuse, and additional barriers can exist for some children with respect to recognising or disclosing it. We are committed to anti-discriminatory practice and recognise children's diverse circumstances. We ensure that all children have the same protection, regardless of any barriers they may face.

We give special consideration to children who:

- Have special educational needs (SEN) or disabilities see our SEN policy-on school website <https://www.oldbankschool.co.uk/>
- Are young carers
- May experience discrimination due to their race, ethnicity, religion, gender identification or sexuality
- Have English as an additional language

Safeguarding and promoting the welfare of children is everyone's responsibility.

- Are known to be living in difficult situations – for example, temporary accommodation or where there are issues such as substance abuse or domestic violence
- Are at risk of FGM, sexual exploitation, forced marriage, or radicalisation
- Are asylum seekers
- Are at risk due to either their own or a family member's mental health needs
- Are looked after or previously looked after

5. Roles and responsibilities

Safeguarding and child protection is **everyone's** responsibility. This policy applies to all staff, volunteers and governors in the school and is consistent with the procedures of the 3 safeguarding partners. This information can be found here <https://www.kirkleessafeguardingchildren.co.uk/wp-content/uploads/2019/07/MASA-v8-Final.pdf>

Our policy and procedures also apply to extended school and off-site activities.

5.1 All staff

All staff will read and understand part 1 and Annex A of the Department for Education's statutory safeguarding guidance, [Keeping Children Safe in Education](#), and review this guidance at least annually. All staff will sign an **annual declaration** to say that they have read and understood these.

All staff are aware that safeguarding incidents and/or behaviours can be associated with factors outside school and/or can occur between children outside of this environment. Staff know that they should consider whether children are at risk of abuse or exploitation in situations outside their families (e.g. sexual exploitation, criminal exploitation, serious youth violence)

All staff will be aware of:

Our systems which support safeguarding, including this child protection and safeguarding policy, the staff code of conduct, the role and identity of the designated safeguarding lead (DSL) and deputy(ies) (DDSL), the behaviour policy, and the safeguarding response to children who go missing from education. This information can be located on the school website and requested from the school office.

The early help process (sometimes known as the common assessment framework or TAF (Team around the family) and their role in it, including identifying emerging problems, liaising with the DSL, and sharing information with other professionals to support early identification and assessment.

The process for making referrals to local authority children's social care and for statutory assessments that may follow a referral, including the role they might be expected to play, what to do if they identify a safeguarding issue or a child tells them

Safeguarding and promoting the welfare of children is everyone's responsibility.

they are being abused or neglected, including specific issues such as FGM, and how to maintain an appropriate level of confidentiality while liaising with relevant professionals.

The signs of different types of abuse and neglect, as well as specific safeguarding issues, such as child sexual exploitation (CSE), indicators of being at risk from or involved with serious violent crime, FGM and radicalization.

Staff should speak to a DSL about their initial concerns and an early help referral will be conducted if necessary. Guidance, forms and support can be found at <https://www.kirkleessafeguardingchildren.co.uk/safeguarding-2/safeguarding-processes-and-systems/early-support/>

5.2 The designated safeguarding lead (DSL)

The DSL is a member of the senior leadership team. Our DSL is Judy Wood. The DSL takes lead responsibility for child protection and wider safeguarding.

During term time, the DSL will be available during school hours for staff to discuss any safeguarding concerns. Out of hours contact can be made with the head via head@oldbankschool.co.uk

When the DSL is absent, the deputies; Amy Taylor (Assistant Head & SENCO), & Susan Bird (Thrive Practitioner) will act as cover.

If the DSL and DDSL(s) are not available, Barbara Cooper (Attendance & Pastoral Support Officer) will act as cover (for example, during out-of-hours/out-of-term activities).

The DSL will be given the time, funding, training, resources and support to:

- Provide advice and support to other staff on child welfare and child protection matters
- Take part in strategy discussions and inter-agency meetings and/or support other staff to do so
- Contribute to the assessment of children
- Refer suspected cases, as appropriate, to the relevant body (local authority children's social care, Channel programme, Disclosure and Barring Service, and/or police), and support staff who make such referrals directly

The DSL will also keep the headteacher informed of any issues and liaise with local authority case managers and designated officers for child protection concerns as appropriate.

The full responsibilities of the DSL and deputies are set out in their job description.

- "DSLs should help promote educational outcomes by sharing information about the welfare, safeguarding and child protection issues that children (including

Safeguarding and promoting the welfare of children is everyone's responsibility.

those with a social worker) are experiencing, or have experienced, with teachers and other staff"

- This is done by, for example:
 - Making sure that staff know who these children are, understand their academic progress and attainment, and maintain a culture of high aspirations for them
 - Supporting teaching staff to identify the challenges that children in this group might face, and the additional academic support and adjustments that they could make to best support them.

5.3 The local governing board

The governing board will approve this policy at each review, ensure it complies with the law and hold the headteacher to account for its implementation.

The local governing board will appoint a senior board level (or equivalent) lead to monitor the effectiveness of this policy in conjunction with the full governing board.

Andrew Eastwood is the Governor responsible for safeguarding.

This is always a different person from the DSL.

Pat McDermott is the nominated Trustee for safeguarding.

The chair of governors will act as the 'case manager' in the event that an allegation of abuse is made against the headteacher, where appropriate contact: **andrew.eastwood@oldbankschool.co.uk**

All governors will read Keeping Children Safe in Education and sign an annual declaration to say that they have read and understood it. The headteacher will ensure that governors understand KCSIE 2020 and will be the point of contact for any queries.

5.4 The headteacher

The headteacher is responsible for the implementation of this policy, including:

- Ensuring that staff (including temporary staff) and volunteers are informed of our systems which support safeguarding, including this policy, as part of their induction.
- Communicating this policy to parents when their child joins the school and via the school website
- Ensuring that the DSL has appropriate time, funding, training and resources, and that there is always adequate cover if the DSL is absent
- Ensuring that all staff undertake appropriate safeguarding and child protection training and update this regularly and record it on the school's training log.
- Acting as the 'case manager' in the event of an allegation of abuse made against another member of staff or volunteer, where appropriate (see appendix 3)
- Case manager should use the LADO lado.cases@kirklees.gov.uk
This will assist the case manager and HR in consultation with the LADO.
- Ensuring the relevant staffing ratios are met, where applicable
- Making sure each child in the Early Years Foundation Stage is assigned a key person

Safeguarding and promoting the welfare of children is everyone's responsibility.

6. Confidentiality

The Staff Policy Handbook for the IMPACT Education Multi-Academy Trust e.g. Staff Code of Conduct Pg 36-41 and Disciplinary Procedure – Pg 42-51

Confidentiality is an issue that needs to be understood by all those working with pupils particularly in the context of safeguarding

Old Bank Academy recognises that the only purpose of confidentiality in this respect is to benefit the pupil. Staff, volunteers and visitors to school should never promise a pupil that they will not tell anyone about an allegation or disclosure and must pass any cause for concerns immediately to a designated safeguarding lead, this also includes disclosures of pregnancy.

Information sharing and GDPR

- Timely information sharing is essential for effective safeguarding. This academy will share safeguarding information as appropriate in keeping with the principles outlined in the government guidance document, [Information sharing: Advice for practitioners providing safeguarding services to children, young people, parents and carers \(DfE 2018\)](#). This guidance has been produced to support practitioners in the decisions they take to share information, which reduces the risk of harm to children and young people and promotes their well-being. This includes sharing information with our safeguarding partners.
- The storing and processing of personal data is governed by the General Data Protection Regulations 2017 (GDPR) and Data Protection Act 2018. This academy will give clear advice to staff about their responsibilities under this legislation so that, when considering sharing confidential information, those principles should apply.
- Fears about sharing information must not be allowed to stand in the way of the need to promote the welfare, and protect the safety, of children The Data Protection Act (DPA) 2018 and GDPR do not prevent, or limit, the sharing of information for the purposes of keeping children safe
- If staff need to share 'special category personal data', the DPA 2018 contains 'safeguarding of children and individuals at risk' as a processing condition that allows practitioners to share information without consent if it is not possible to gain consent, it cannot be reasonably expected that a practitioner gains consent, or if to gain consent would place a child at risk
- The government's information sharing advice for safeguarding practitioners includes 7 'golden rules' for sharing information, and will support staff who have to make decisions about sharing information
- If staff are in any doubt about sharing information, they should speak to the designated safeguarding lead (or deputy)

Safeguarding and promoting the welfare of children is everyone's responsibility.

- Confidentiality is also addressed in this policy with respect to record-keeping in section 12, and allegations of abuse against staff in appendix 3
- Staff may have access to special category personal data about pupils and their families which must be kept confidential at all times and only shared when legally permissible to do so and in the interest of the child. Records should only be shared with those who have a legitimate professional need to see them.

Staff at Old Bank Academy understand that:

- › Timely information sharing is essential to effective safeguarding
- › Fears about sharing information must not be allowed to stand in the way of the need to promote the welfare, and protect the safety, of children
- › The Data Protection Act (DPA) 2018 and GDPR do not prevent, or limit, the sharing of information for the purposes of keeping children safe
- › If staff need to share 'special category personal data', the DPA 2018 contains 'safeguarding of children and individuals at risk' as a processing condition that allows practitioners to share information without consent if it is not possible to gain consent, it cannot be reasonably expected that a practitioner gains consent, or if to gain consent would place a child at risk
- › Staff should never promise a child that they will not tell anyone about a report of abuse, as this may not be in the child's best interests
- › The government's [information sharing advice for safeguarding practitioners](#) includes 7 'golden rules' for sharing information, and will support staff who have to make decisions about sharing information
- › If staff are in any doubt about sharing information, they should speak to the designated safeguarding lead (or deputy)
- › Confidentiality is also addressed in this policy with respect to record-keeping in section 12, and allegations of abuse against staff in appendix 3

7. Recognising abuse and taking action

Staff, volunteers and governors must follow the procedures set out below in the event of a safeguarding issue.

Please note – in this and subsequent sections, you should take any references to the DSL to mean "the DSL (or deputy DSL)".

7.1 If a child is suffering or likely to suffer harm, or in immediate danger

Make a referral to children's social care and/or the police **immediately** if you believe a child is suffering or likely to suffer from harm, or in immediate danger. **Anyone can make a referral.**

Tell the DSL (see section 5.2) as soon as possible if you make a referral directly.

Safeguarding and promoting the welfare of children is everyone's responsibility.

Staff can contact Kirklees Children's Social Care Duty & Advice on: 01484 414960 to make a referral. More information about referrals to services such as Early Support/Prevent can be found here

<https://www.kirkleessafeguardingchildren.co.uk/safeguarding-2/safeguarding-processes-and-systems/>

The following link to the GOV.UK webpage can also be used for reporting child abuse to your local council:

<https://www.gov.uk/report-child-abuse-to-local-council>

7.2 If a child makes a disclosure to you

If a child discloses a safeguarding issue to you, you should:

- Listen to and believe them. Allow them time to talk freely and do not ask leading questions
- Stay calm and do not show that you are shocked or upset
- Tell the child they have done the right thing in telling you. Do not tell them they should have told you sooner
- Explain what will happen next and that you will have to pass this information on. Do not promise to keep it a secret
- Write up your conversation as soon as possible in the child's own words. Stick to the facts, and do not put your own judgement on it
- Sign and date the write-up and put the information onto the CPOMS system before talking to a DSL. Alternatively, if appropriate, make a referral to children's social care and/or the police directly (see 7.1), and tell the DSL as soon as possible that you have done so.

7.3 If you discover that FGM has taken place or a pupil is at risk of FGM

The Department for Education's Keeping Children Safe in Education explains that FGM comprises "all procedures involving partial or total removal of the external female genitalia, or other injury to the female genital organs".

FGM is illegal in the UK and a form of child abuse with long-lasting, harmful consequences. It is also known as 'female genital cutting', 'circumcision' or 'initiation'. Possible indicators that a pupil has already been subjected to FGM, and factors that suggest a pupil may be at risk, are set out in appendix 4.

Any teacher who discovers (either through disclosure by the victim or visual evidence) that an act of FGM appears to have been carried out on a **pupil under 18** must immediately report this to the police, personally. This is a statutory duty, and teachers will face disciplinary sanctions for failing to meet it.

Unless they have good reason not to, they should also discuss the case with the DSL and involve children's social care as appropriate.

Safeguarding and promoting the welfare of children is everyone's responsibility.

Any other member of staff who discovers that an act of FGM appears to have been carried out on a **pupil under 18** must speak to the DSL and follow our local safeguarding procedures.

The duty for teachers mentioned above does not apply in cases where a pupil is *at risk* of FGM or FGM is suspected but is not known to have been carried out. Staff should not examine pupils.

Any member of staff who suspects a pupil is *at risk* of FGM or suspects that FGM has been carried out must speak to the DSL and follow our local safeguarding Procedures. Guidance, referrals and documentation can be found via Kirklees Safeguarding Children's Board via

<https://www.kirkleessafeguardingchildren.co.uk/wp-content/uploads/2020/01/Kirklees-Child-FGM-Pathway-v5.pdf>
<https://www.kirkleessafeguardingchildren.co.uk/managed/File/Info%20for%20Professionals/Kirklees%20FGM%20Strategy%20FINAL%20July%202016.pdf>

7.4 If you have concerns about a child (as opposed to believing a child is suffering or likely to suffer from harm, or is in immediate danger)

Figure 1 on page 13 illustrates the procedure to follow if you have any concerns about a child's welfare.

Where possible, speak to the DSL first to agree a course of action.

If in exceptional circumstances the DSL is not available, this should not delay appropriate action being taken. Speak to a member of the senior leadership team and/or take advice from local authority children's social care. You can also seek advice at any time from the NSPCC helpline on 0808 800 5000.

Make a referral to local authority children's social care directly, if appropriate (see 'Referral' below). Share any action taken with the DSL as soon as possible.

Early help

If early help is appropriate, the DSL will generally lead on liaising with other agencies and setting up an inter-agency assessment as appropriate. Staff may be required to support other agencies and professionals in an early help assessment, in some cases acting as the lead practitioner.

The DSL will keep the case under constant review and the school will consider a referral to local authority children's social care if the situation does not seem to be improving. Timelines of interventions will be monitored and reviewed.

Early help can be found via the Kirklees Early Support Partnership at

<https://www.kirkleessafeguardingchildren.co.uk/safeguarding-2/safeguarding-processes-and-systems/early-support/>

Referral

If it is appropriate to refer the case to local authority children's social care or the police, the DSL will make the referral or support you to do so.

If you make a referral directly (see section 7.1), you must tell the DSL as soon as possible.



Safeguarding and promoting the welfare of children is everyone's responsibility.

The local authority will make a decision within 1 working day of a referral about what course of action to take and will let the person who made the referral know the outcome. The DSL or person who made the referral must follow up with the local authority if this information is not made available, and ensure outcomes are properly recorded.

If the child's situation does not seem to be improving after the referral, the DSL or person who made the referral must follow local escalation procedures to ensure their concerns have been addressed and that the child's situation improves.

[Referrals.](#)

https://westyorkscb.proceduresonline.com/p_referr.html

[Escalation.](#)

https://westyorkscb.proceduresonline.com/p_res_profdisag.html?zoom_highlight=escalation

7.5 If you have concerns about extremism

If a child is not suffering or likely to suffer from harm, or in immediate danger, where possible speak to the DSL first to agree a course of action.

If in exceptional circumstances the DSL is not available, this should not delay appropriate action being taken. Speak to a member of the senior leadership team and/or seek advice from local authority children's social care. Make a referral to local authority children's social care directly, if appropriate (see 'Referral' above).

Where there is a concern, the DSL will consider the level of risk and decide which agency to make a referral to. This could include [Channel](#), the government's programme for identifying and supporting individuals at risk of being drawn into terrorism, or the local authority children's social care team.

The Department for Education also has a dedicated telephone helpline, 020 7340 7264, which school staff and governors can call to raise concerns about extremism with respect to a pupil. You can also email counter.extremism@education.gov.uk.

Note that this is not for use in emergency situations.

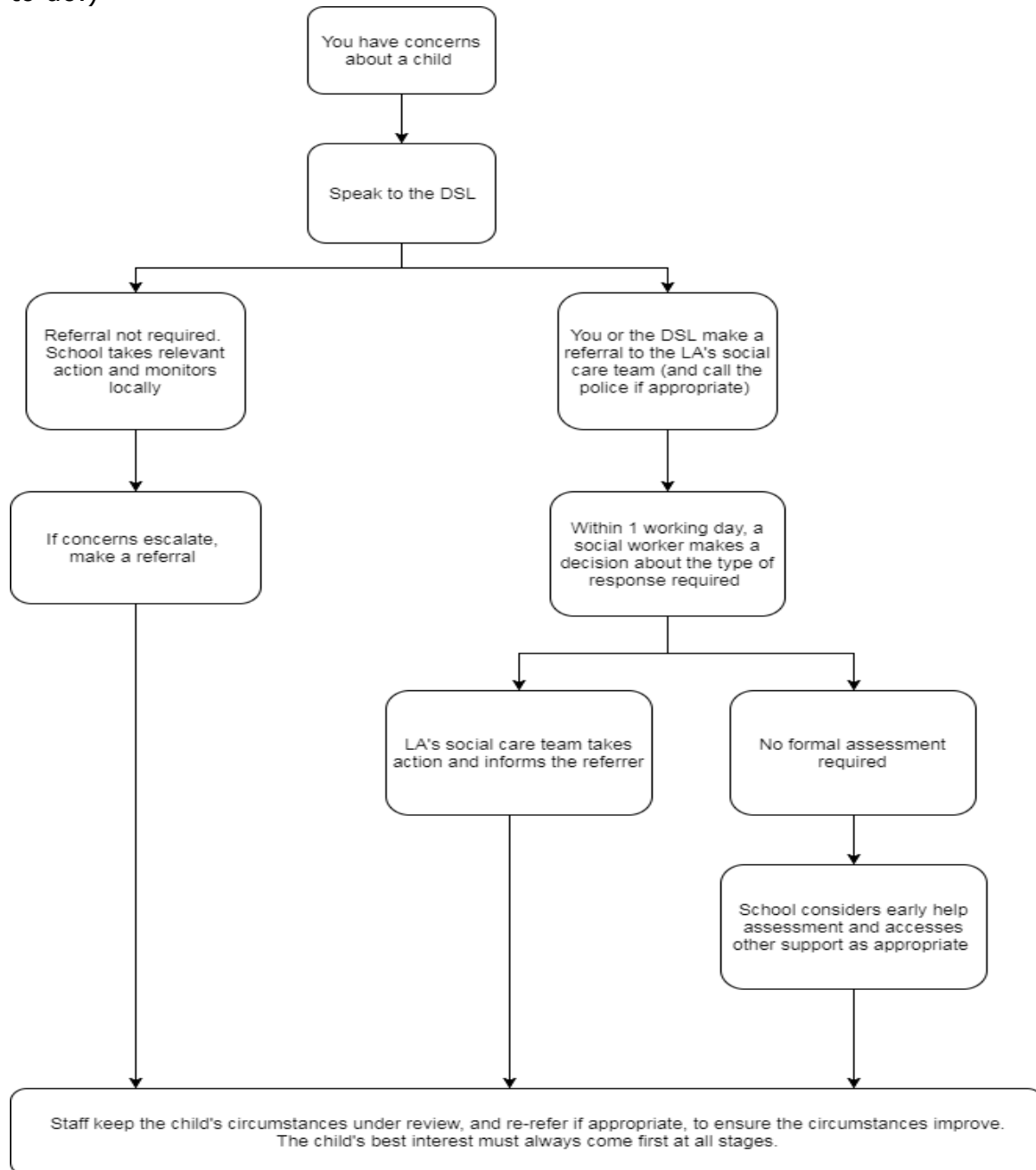
In an emergency, call 999 or the confidential anti-terrorist hotline on 0800 789 321 if you:

- Think someone is in immediate danger
- Think someone may be planning to travel to join an extremist group
- See or hear something that may be terrorist-related

Safeguarding and promoting the welfare of children is everyone's responsibility.

Figure 1: procedure if you have concerns about a child's welfare (as opposed to believing a child is suffering or likely to suffer from harm, or in immediate danger)

(Note –if the DSL is unavailable, this should not delay action. See section 7.4 for what to do.)



Safeguarding and promoting the welfare of children is everyone's responsibility.

7.6 Concerns about a staff member or volunteer

If you have concerns about a member of staff or volunteer, or an allegation is made about a member of staff or volunteer posing a risk of harm to children, speak to the headteacher. If the concerns/allegations are about the headteacher, speak to the chair of governors.

The headteacher/chair of governors will then follow the procedures set out in appendix 3, if appropriate.

Where appropriate, the school will inform Ofsted of the allegation and actions taken, within the necessary timescale.

7.7 Allegations of abuse made against other pupils

We recognise that children are capable of abusing their peers. Abuse will never be tolerated or passed off as "banter", "just having a laugh" or "part of growing up". We also recognise the gendered nature of peer-on-peer abuse (i.e. that it is more likely that girls will be victims and boys perpetrators). However, all peer-on-peer abuse is unacceptable and will be taken seriously.

Most cases of pupils hurting other pupils will be dealt with under our school's behaviour policy, but this child protection and safeguarding policy will apply to any allegations that raise safeguarding concerns. This might include where the alleged behaviour:

- Is serious, and potentially a criminal offence
- Could put pupils in the school at risk
- Is violent
- Involves pupils being forced to use drugs or alcohol
- Involves sexual exploitation, sexual abuse or sexual harassment, such as indecent exposure, sexual assault, upskirting (New. See KCSIE 2020 p.94) or sexually inappropriate pictures or videos (including sexting)

If a pupil makes an allegation of abuse against another pupil:

- You must record the allegation and tell the DSL, but do not investigate it
- The DSL will contact the local authority children's social care team and follow its advice, as well as the police if the allegation involves a potential criminal offence
- The DSL will put a risk assessment and support plan into place for all children involved (including the victim(s), the child(ren) against whom the allegation has been made and any others affected) with a named person they can talk to if needed
- The DSL will contact the children and adolescent mental health services (CAMHS), if appropriate. Old Bank Academy will make a referral through THRIVE Kirklees.

Safeguarding and promoting the welfare of children is everyone's responsibility.

We will minimise the risk of peer-on-peer abuse by:

- Challenging any form of derogatory or sexualised language or behaviour, including requesting or sending sexual images
- Being vigilant to issues that particularly affect different genders – for example, sexualised or aggressive touching or grabbing towards female pupils, and initiation or hazing type violence with respect to boys
- Ensuring our curriculum helps to educate pupils about appropriate behaviour and consent
- Ensuring our curriculum helps to educate our pupils about LGBTQ communities
- Ensuring pupils know they can talk to staff confidentially by ensuring that children are aware that there are safe adults in school who they can talk to about any worries or concerns to keep them safe. This is signposted to pupils via safeguarding posters/ assemblies/ through PSHE etc.
- Ensuring staff are trained to understand that a pupil harming a peer could be a sign that the child is being abused themselves, and that this would fall under the scope of this policy

7.8 Sexting

Your responsibilities when responding to an incident

If you are made aware of an incident involving sexting (also known as 'youth produced sexual imagery'), you must report it to the DSL immediately.

You must **not**:

- View, download or share the imagery yourself, or ask a pupil to share or download it. If you have already viewed the imagery by accident, you must report this to the DSL
- Delete the imagery or ask the pupil to delete it
- Ask the pupil(s) who are involved in the incident to disclose information regarding the imagery (this is the DSL's responsibility)
- Share information about the incident with other members of staff, the pupil(s) it involves or their, or other, parents and/or carers
- Say or do anything to blame or shame any young people involved

You should explain that you need to report the incident and reassure the pupil(s) that they will receive support and help from the DSL.

Initial review meeting

Safeguarding and promoting the welfare of children is everyone's responsibility.

Following a report of an incident, the DSL will hold an initial review meeting with appropriate school staff. This meeting will consider the initial evidence and aim to determine:

- Whether there is an immediate risk to pupil(s)
- If a referral needs to be made to the police and/or children's social care
- If it is necessary to view the imagery in order to safeguard the young person (in most cases, imagery should not be viewed)
- What further information is required to decide on the best response
- Whether the imagery has been shared widely and via what services and/or platforms (this may be unknown)
- Whether immediate action should be taken to delete or remove images from devices or online services
- Any relevant facts about the pupils involved which would influence risk assessment
- If there is a need to contact another school, college, setting or individual
- Whether to contact parents or carers of the pupils involved (in most cases parents should be involved)

The DSL will make an immediate referral to police and/or children's social care if:

- The incident involves an adult
- There is reason to believe that a young person has been coerced, blackmailed or groomed, or if there are concerns about their capacity to consent (for example owing to special educational needs)
- What the DSL knows about the imagery suggests the content depicts sexual acts which are unusual for the young person's developmental stage, or are violent
- The imagery involves sexual acts and any pupil in the imagery is under 13
- The DSL has reason to believe a pupil is at immediate risk of harm owing to the sharing of the imagery (for example, the young person is presenting as suicidal or self-harming)

If none of the above apply then the DSL, in consultation with the headteacher and other members of staff as appropriate, may decide to respond to the incident without involving the police or children's social care.

Further review by the DSL

If at the initial review stage a decision has been made not to refer to police and/or children's social care, the DSL will conduct a further review.

They will hold interviews with the pupils involved (if appropriate) to establish the facts and assess the risks.

Safeguarding and promoting the welfare of children is everyone's responsibility.

If at any point in the process there is a concern that a pupil has been harmed or is at risk of harm, a referral will be made to children's social care and/or the police immediately.

Informing parents

The DSL will inform parents at an early stage and keep them involved in the process, unless there is a good reason to believe that involving them would put the pupil at risk of harm.

Referring to the police

If it is necessary to refer an incident to the police, this will be done through contacting 101. An email to local PCSO will also be sent by a DSL.

Recording incidents

All sexting incidents and the decisions made in responding to them will be recorded. The record-keeping arrangements set out in section 12 of this policy also apply to recording incidents of sexting.

Curriculum coverage

Pupils are taught about the issues surrounding social media and image sharing as part of our PSHE education and computing programmes. Teaching covers the following:

- › The dangers around image sharing and inappropriate use of social media- sexting is not referenced explicitly until Year 6 where children are provided with an insight that is age and cohort appropriate, taking into account children who may have been a victim of sexting previously
- › How it is most likely to be encountered
- › The consequences of requesting, forwarding or providing such images, including when it is and is not abusive
- › Issues of legality
- › The risk of damage to people's feelings and reputation

Pupils also learn the strategies and skills needed to manage:

- › Specific requests or pressure to provide (or forward) such images
- › The receipt of such images

This policy on sexting is also shared with pupils so they are aware of the processes the school will follow in the event of an incident.

8. Notifying parents

Where appropriate, we will discuss any concerns about a child with the child's parents. The DSL will normally do this in the event of a suspicion or disclosure. Other staff will only talk to parents about any such concerns following consultation with the DSL.

Safeguarding and promoting the welfare of children is everyone's responsibility.

If we believe that notifying the parents would increase the risk to the child, we will discuss this with the local authority children's social care team before doing so. In the case of allegations of abuse made against other children, we will normally notify the parents of all the children involved.

9. Pupils with special educational needs and disabilities

We recognise that pupils with special educational needs (SEN) and disabilities can face additional safeguarding challenges. Additional barriers can exist when recognising abuse and neglect in this group, including:

- Assumptions that indicators of possible abuse such as behaviour, mood and injury relate to the child's disability without further exploration
- Pupils being more prone to peer group isolation than other pupils
- The potential for pupils with SEN and disabilities being disproportionately impacted by behaviours such as bullying, without outwardly showing any signs
- Communication barriers and difficulties in overcoming these barriers

We offer extra pastoral support for pupils with SEN and disabilities. This includes:

- Child-centred reviews undertaken regularly
- One Page profiles with children's contributions at the forefront of the document
- Additional Support for those identified through Thrive assessment

10. Mobile phones and cameras

Staff are allowed to bring their personal phones to school for their own use but will limit such use to non-contact time when pupils are not present. Staff members' personal phones will remain in their bags or cupboards during contact time with pupils.

Staff will not take pictures or recordings of pupils on their personal phones or cameras.

We will follow the General Data Protection Regulation and Data Protection Act 2018 when taking and storing photos and recordings for use in the school. Also see the Trust's Staff Policy Handbook.

Staff should refer to the social and digital media policy & use of mobile phones policy on the school website.

Mobile phones and cameras should be kept out of sight and only used during breaks or lunchtimes in the staffroom/off site or with permission from the Headteacher.

As part of our academy activities, we may take photographs and record images of individuals within our academy. These will always be on a trusted device owned by the academy. We will obtain written consent from parents/carers, or pupils aged 18 and over, for photographs and videos to be taken of their child for communication, marketing and promotional materials. We will clearly explain how the photograph and/or video will be used to both the parent/carer and pupil. Uses may include:

Safeguarding and promoting the welfare of children is everyone's responsibility.

- Within school on notice boards and in academy magazines, brochures, newsletters, etc.
- Outside of school by external agencies such as the school photographer, newspapers, campaigns
- Online on our school website or social media pages
- Consent can be refused or withdrawn at any time. If consent is withdrawn, we will delete the photograph or video and not distribute it further. When using photographs and videos in this way we will not accompany them with any other personal information about the child, to ensure they cannot be identified.

11. Complaints and concerns about school safeguarding policies

11.1 Complaints against staff

Complaints against staff that are likely to require a child protection investigation will be handled in accordance with our procedures for dealing with allegations of abuse made against staff (see appendix 3).

11.2 Other complaints

General principles

Old Bank Academy is clear about the difference between a concern and a complaint. By taking informal concerns seriously at the earliest stage, the numbers that develop into formal complaints are kept to a minimum.

The underlying principle in our school is that concerns are handled without the need for formal procedures. For example, if necessary, staff receiving the first approach try to resolve issues on the spot by discussing and apologising, if necessary.

Formal procedures are only started after initial attempts to resolve the issue are unsuccessful and the person raising the concern remains dissatisfied and wishes to take the matter further.

The school:

- welcomes complaints as a positive means of promoting pupil/parent satisfaction
- uses complaints as a way of identifying opportunities to do things better
- listens to pupils and parents
- seeks to resolve complaints swiftly
- replies with an acknowledgement letter or telephone call, in the first instance if a complaint is sent in by letter
- to let the complainant, know that we are looking into the matter
- has clear, simple to understand and use, published procedures for making complaints
- keeps complainants informed about progress

Safeguarding and promoting the welfare of children is everyone's responsibility.

- provides redress where a complaint is found to have substance
- regularly reviews how effective the complaints procedure is

Investigating complaints

The person who takes forward the first formal procedure makes sure s/he:

- establishes what has happened so far and who has been involved
- clarifies the nature of the complaint and what remains unresolved
- meet the complainant or contacts them if further information is required
- clarifies what the complainant feels would put things right
- interview those involved, with an open mind
- keeps notes of any interviews
- keeps the Chair of Governors informed, without giving any details at this stage

Resolving complaints

At each stage, the school keeps in mind ways the complaint can be resolved. It might be sufficient to acknowledge that the complaint is valid in whole or in part. It might also be appropriate to offer:

- an apology
- an explanation
- an admission that the situation could have been handled differently or better
- an assurance that the event complained of will not recur
- an explanation of the steps taken to make sure it will not happen again
- an undertaking to review school policies in light of the complaint

The school encourages complainants to state what actions they feel might resolve the problem at any stage.

For further information, including how we investigate a complaint please refer to our Complaints Procedure on the school website.

Whistleblowing

Refer to the Trust's Staff Policy Handbook on Whistleblowing on Pages 87-92.

We will signpost parents and/or carers of children in EYFS to details about how to contact Ofsted as appropriate/when requested.

12. Record-keeping

We will hold records in line with our records retention schedule.

All safeguarding concerns, discussions, decisions made and the reasons for those decisions, must be recorded on CPOMS. If you are in any doubt about whether to record something, discuss it with the DSL.

Non-confidential records will be easily accessible and available. Confidential information and records will be held securely and only available to those who have a right or professional need to see them.

Safeguarding and promoting the welfare of children is everyone's responsibility.

Safeguarding records relating to individual children will be retained for a reasonable period of time after they have left the school.

If a child for whom the school has, or has had, safeguarding concerns moves to another school, the DSL will ensure that their child protection file is forwarded promptly and securely, and separately from the main pupil file. In addition, if the concerns are significant or complex, and/or social services are involved, the DSL will speak to the DSL of the receiving school and provide information to enable them to have time to make any necessary preparations to ensure the safety of the child.

At Old Bank Academy:

- Records are kept electronically using a secure, password protected CPOMS system.
- Records are held within CPOMS and documents are uploaded and paper copies destroyed.
- Records are kept secure through CPOMS 2 factor authentication system.
- Electronic information on CPOMS is retained until a pupil leaves to attend another school- when this happens the new school can request records via the CPOM system- the lead DSL will authorize transfers for individual children via the CPOM secure system.
- How will you make sure records are kept confidential when appropriate? If it is appropriate to keep a safeguarding record confidential, then information will be saved on a secure, password protected folder on the school sever. This can only be accessed by the lead DSL and DDSL's when and if appropriate.
- At Old Bank we share information with other agencies as follows:
 - Regular meetings with KNH/PCSO
 - Mirfield Hub – meeting with DDSL on regular basis
 - Regular access to Family Support Workers- coordinated meeting with DDSL
 - At Old Bank Academy records include:
 - Any child protection information received from the child's previous educational establishment
 - Records of discussions, telephone calls and meetings with colleagues and other agencies or services
 - Professional consultations
 - Letters and emails sent and received relating to child protection matters
 - Referral forms sent to Duty and Advice, other external agencies or education-based services
 - Minutes or notes of meetings, e.g. child protection conferences, core group meetings, etc., copied to the file of each child in the family, as appropriate
 - Formal plans for, or linked to, the child e.g. Child Protection Plans, Early Support risk assessments etc

Safeguarding and promoting the welfare of children is everyone's responsibility.

- A copy of any support plan for the pupil concerned will be uploaded and recorded on CPOMS
- When a pupil leaves this academy we will ensure that the child protection file is transferred securely and separately from the main pupil file to the receiving school/educational establishment (where this is known) as soon as possible and within 15 school days. This is a legal requirement set out under regulation 9 (3) of 'The Education (Pupil Information – England) Regulations 2005. A copy of the chronology will be retained for audit purposes
- When there is an existing risk management plan/assessment in place for behaviours that are deemed potentially harmful to the pupil or others (i.e. self-harming or harmful sexualised behaviour), this information will be shared with the destination provision prior to the pupil starting so that appropriate care and control measures can be put in place to mitigate the potential of any risk of further harm occurring. The designated safeguarding lead will consider if it would be appropriate to share any information with the new school or college in advance of a child leaving, for example prior to a transfer programme. **When a child leaves school before statutory school leaving age, the child protection file will be transferred to the new school or college.** There is no need for this school to keep written or electronic copies of the child protection records, therefore these will be deleted from electronic systems once the successful transfer has been confirmed. The exception to this rule will be in any of the following instances:
 - When a vulnerable young person is moving to a further education establishment, consideration will be given to the pupil's wishes and feelings about their child protection information being passed on, in order that the FE establishment can provide appropriate support. In cases when it is deemed appropriate, relevant child protection information will be shared via the FE Safeguarding Information Sharing Form (Appendix 9). The original records will be retained and archived by this school/college. Due consideration will be given to the sharing of any additional information requested by the receiving establishment
 - When the destination school is not known (*the original records should be retained by the academy*)
 - When the child has not attended the nominated school (*the original records should be retained by the academy*)
 - There is any on-going legal action (*the original file should be retained by the academy and a copy sent*)
 - Pupil records will be transferred in a secure manner, for example, through secure electronic file transfer or by hand. When hand-delivering pupil records, a list of the names of those pupils whose records are being transferred and the name of the school/college they are being transferred to will be made and a signature obtained from the receiving school/college as proof of receipt. When sending records through secure electronic file transfer, a delivery and read receipt of the transfer will be retained for audit purposes

Safeguarding and promoting the welfare of children is everyone's responsibility.

- If a pupil moves from our school, child protection records will be forwarded onto the named designated safeguarding lead at the new school, with due regard to their confidential nature. Good practice suggests that this should always be done with a face to face handover between designated staff or a verbal conversation is had over the telephone if a face to face handover is not possible. A signed receipt of file transfer or an electronic delivery and read receipt must be obtained for audit purposes by the delivering school
- When sending by post, pupil's records will be sent "Special Delivery". A **note** of the special delivery number should also be made to enable the records to be tracked and traced via Royal Mail
- For audit purposes a note of all pupil records transferred or received will be kept in either paper or electronic format. This will include the child's name, date of birth, where and to whom the records have been sent, and the date sent and/or received. A copy of the child protection chronology will also be retained for audit purposes and kept securely
- If a pupil is permanently excluded and moves to an alternative or specialist provision, child protection records will be forwarded onto the relevant organisation in accordance with the 'The Education (Pupil Information – England) Regulations 2005, following the above procedure for delivery of the records
- When a designated safeguarding lead member of staff resigns their post or no longer has child protection responsibility, there will be a full face to face handover/exchange of information with the new post holder
- In exceptional circumstances when a face to face handover is unfeasible, it is the responsibility of the Headteacher to ensure that the new post holder is fully conversant with all procedures and case files
- All designated safeguarding leads receiving current (live) files or closed files will keep all contents enclosed and not remove any material
- All receipts confirming file transfer will be kept in accordance with the recommended school retention periods. For further information refer to the archiving section

Archiving

The school that the pupil attended until statutory school leaving age (or the school where the pupil completed sixth form studies) is responsible for retaining any child protection records they may hold. The recommended retention periods is 35 years from closure when there has been a referral to Duty and Advice. If no referral has been made to Duty and Advice the child protection record should be retained until the child's 25th birthday, after which point the file will be destroyed confidentially/deleted from our school electronic system. The decision of how and where to store child protection files must be made by our school via our governing body. Due to sensitivity of the information, the records should continue to be held in a secure area with limited access e.g. designated officer or head teacher. The DSL is responsible for ensuring that all child protection files are archived in accordance with the timescales referenced above. The designated safeguarding lead is responsible for ensuring that



Safeguarding and promoting the welfare of children is everyone's responsibility.

the appropriate timeframes for archiving and destroying child protection records referenced above are set on electronic systems accordingly for each pupil.

Child and parent access to child protection files

Under Data Protection legislation (General Data Protection Regulation & Data Protection Act 2018) a pupil or their nominated representative have several legal rights in respect of information relating to them. These rights include the right to access and the right to rectification of inaccurate data. Therefore, it is important to remember that all information should be accurately recorded, objective in nature and expressed in a professional manner

Any pupil who has a child protection file has a right to request access to it. However, neither the pupil nor the parent has an automatic right to see all the information held in child protection records. Information can be withheld if disclosure:

- Could cause serious harm or is likely to cause serious harm to the physical or mental health or condition of the child or another person
- Could reveal that the child or another person has been a subject of or may be at risk of child abuse, and the disclosure is not in the best interests of the child
- Is likely to prejudice an on-going criminal investigation
- Information about the child also relates to another person who could be identified from it or the information has been given by another person who could be identified as the source, unless the person has consented to the disclosure or the person providing the information is an employee of the establishment or the Local Authority
- It is best practice to make reports available to the child or their parents unless the exceptions described above apply. If an application is made to see the whole record, advice can be sought from the Local Authority
- The establishment's report to the child protection conference should be shared with the child, if old enough, and parent at least two days before the conference

Safe destruction of the pupil record

Where records have been identified for destruction, they will be disposed of securely at the end of the academic year (or as soon as practical before that time). Records which have been identified for destruction should be confidentially destroyed. This is because they will either contain personal or sensitive information, which is subject to the requirements of Data Protection legislation or they will contain information which is confidential to our school or the Local Authority. Information should be shredded (or deleted as appropriate) prior to disposal or confidential disposal can be arranged through private contractors. For audit purposes the academy will maintain a list of records which have been destroyed and who authorised their destruction. This can be kept securely in either paper or an electronic format.

Safeguarding and promoting the welfare of children is everyone's responsibility.

In addition:

- Appendix 2 sets out our policy on record-keeping specifically with respect to recruitment and pre-employment checks
- Appendix 3 sets out our policy on record-keeping with respect to allegations of abuse made against staff

13. Training

13.1 All staff

All staff members will undertake safeguarding and child protection training at induction, including on whistleblowing procedures, to ensure they understand the school's safeguarding systems and their responsibilities, and can identify signs of possible abuse or neglect. This training will be regularly updated and will be in line with advice from the 3 safeguarding partners.

All staff will have training on the government's anti-radicalisation strategy, Prevent, to enable them to identify children at risk of being drawn into terrorism (Definition now added in KCSIE 2020 p.89) and to challenge extremist ideas.

Staff will also receive regular safeguarding and child protection updates (for example, through emails, e-bulletins, 'hot-topics' and staff meetings) as required, but at least annually.

Contractors who are provided through a private finance initiative (PFI) or similar contract will also receive safeguarding training.

Volunteers will receive appropriate training, if applicable.

13.2 The DSL and deputies

The DSL and deputies will undertake child protection and safeguarding training at least every 2 years.

In addition, they will update their knowledge and skills at regular intervals and at least annually (for example, through e-bulletins, meeting other DSLs, or taking time to read and digest safeguarding developments).

They will also undertake Prevent awareness training.

13.3 Governors

All governors receive training about safeguarding, to make sure they have the knowledge and information needed to perform their functions and understand their responsibilities.

As the chair of governors may be required to act as the 'case manager' in the event that an allegation of abuse is made against the headteacher, they receive training in managing allegations for this purpose.

Safeguarding and promoting the welfare of children is everyone's responsibility.

13.4 Recruitment – interview panels

At least one person conducting any interview for a post at the school will have undertaken safer recruitment training. This will cover, as a minimum, the contents of the Department for Education's statutory guidance, the current Keeping Children Safe in Education guidance, and will be in line with local safeguarding procedures.

13.5 Staff who have contact with pupils and families

All staff who have contact with children and families will have supervisions which will provide them with support, coaching and training, promote the interests of children and allow for confidential discussions of sensitive issues.

14. Monitoring arrangements

This policy will be reviewed **annually** by Judy Wood, Headteacher. At every review, it will be approved by the full governing board.

15. Links with other policies

This policy links to the following policies and procedures:

- Behaviour
- Staff Code of Conduct.
- Complaints
- Health and safety
- Attendance
- Online safety
- Equality
- Sex and relationship education
- First aid
- Curriculum
- Privacy notices
- Intimate care
- Data protection
- Managing allegations
- SCR
- EYFS
- Exclusions

***Safeguarding and promoting the welfare
of children is everyone's responsibility.***

These appendices are based on the Department for Education's statutory guidance, Keeping Children Safe in Education.

Appendix 1: types of abuse

Abuse, including neglect, and safeguarding issues are rarely standalone events that can be covered by one definition or label. In most cases, multiple issues will overlap.

Physical abuse may involve hitting, shaking, throwing, poisoning, burning or scalding, drowning, suffocating or otherwise causing physical harm to a child. Physical harm may also be caused when a parent or carer fabricates the symptoms of, or deliberately induces, illness in a child.

Emotional abuse is the persistent emotional maltreatment of a child such as to cause severe and adverse effects on the child's emotional development. Some level of emotional abuse is involved in all types of maltreatment of a child, although it may occur alone.

Emotional abuse may involve:

- Conveying to a child that they are worthless or unloved, inadequate, or valued only insofar as they meet the needs of another person
- Not giving the child opportunities to express their views, deliberately silencing them or 'making fun' of what they say or how they communicate
- Age or developmentally inappropriate expectations being imposed on children. These may include interactions that are beyond a child's developmental capability, as well as overprotection and limitation of exploration and learning, or preventing the child participating in normal social interaction
- Seeing or hearing the ill-treatment of another
- Serious bullying (including cyberbullying), causing children frequently to feel frightened or in danger, or the exploitation or corruption of children

Sexual abuse involves forcing or enticing a child or young person to take part in sexual activities, not necessarily involving a high level of violence, whether or not the child is aware of what is happening. The activities may involve:

- Physical contact, including assault by penetration (for example rape or oral sex) or non-penetrative acts such as masturbation, kissing, rubbing and touching outside of clothing
- Non-contact activities, such as involving children in looking at, or in the production of, sexual images, watching sexual activities, encouraging children to behave in sexually inappropriate ways, or grooming a child in preparation for abuse (including via the internet)

Sexual abuse is not solely perpetrated by adult males. Women can also commit acts of sexual abuse, as can other children.

Neglect is the persistent failure to meet a child's basic physical and/or psychological needs, likely to result in the serious impairment of the child's health or development. Neglect may occur during pregnancy as a result of maternal substance abuse.



Safeguarding and promoting the welfare of children is everyone's responsibility.

Once a child is born, neglect may involve a parent or carer failing to:

- Provide adequate food, clothing and shelter (including exclusion from home or abandonment)
- Protect a child from physical and emotional harm or danger
- Ensure adequate supervision (including the use of inadequate care-givers)
- Ensure access to appropriate medical care or treatment

It may also include neglect of, or unresponsiveness to, a child's basic emotional needs.

Appendix 2: safer recruitment and DBS checks – policy and procedures

See our Recruitment Policy in the Trust's Staff Policy Handbook on Pages 6-19 for procedures to be followed.

Where an allegation is made against a supply teacher, the Headteacher will immediately contact both the agency concerned and the LADO. The school will continue to support any investigation that is required or take the lead with the agreement of the relevant agency.

Pupils staying with host families

Where the school makes arrangements for pupils to be provided with care and accommodation by a host family to which they are not related (for example, during a foreign exchange visit), we will request enhanced DBS checks with barred list information on those people.

Where the school is organising such hosting arrangements overseas and host families cannot be checked in the same way, we will work with our partner schools abroad to ensure that similar assurances are undertaken prior to the visit.

Appendix 3: allegations of abuse made against staff

We follow the Disciplinary Procedure on Pages 42-51 of the Trust's Staff Policy Handbook.

Safeguarding and promoting the welfare of children is everyone's responsibility.

Appendix 4: specific safeguarding issues

This academy follows the Kirklees Safeguarding Children Partnership (<https://www.kirkleessafeguardingchildren.co.uk/>) online multi-agency procedures and will, where necessary, have due regard to the government guidance for children in specific circumstances as outlined in Part 1 and Annex A of Keeping Children Safe in Education (KCSiE)

Children missing from education

A child going missing from education, particularly repeatedly, can be a warning sign of a range of safeguarding issues. This might include abuse or neglect, such as sexual abuse or exploitation or child criminal exploitation, or issues such as mental health problems, substance abuse, radicalisation, FGM or forced marriage.

There are many circumstances where a child may become missing from education, but some children are particularly at risk. These include children who:

- Are at risk of harm or neglect
- Are at risk of forced marriage or FGM
- Come from Gypsy, Roma, or Traveller families
- Come from the families of service personnel
- Go missing or run away from home or care
- Are supervised by the youth justice system
- Cease to attend a school
- Come from new migrant families

We will follow our procedures for unauthorised absence and for dealing with children who go missing from education, particularly on repeat occasions, to help identify the risk of abuse and neglect, including sexual exploitation, and to help prevent the risks of going missing in future. This includes informing the local authority if a child leaves the school without a new school being named and adhering to requirements with respect to sharing information with the local authority, when applicable, when removing a child's name from the admission register at non-standard transition points.

Staff will be trained in signs to look out for and the individual triggers to be aware of when considering the risks of potential safeguarding concerns which may be related to being missing, such as travelling to conflict zones, FGM and forced marriage.

If a staff member suspects that a child is suffering from harm or neglect, we will follow local child protection procedures, including with respect to making reasonable enquiries. We will make an immediate referral to the local authority children's social care team, and the police, if the child is suffering or likely to suffer from harm, or in immediate danger.

***Safeguarding and promoting the welfare
of children is everyone's responsibility.***

Child sexual exploitation

Child sexual exploitation (CSE) is a form of child sexual abuse that occurs where an individual or group takes advantage of an imbalance of power to coerce, manipulate or deceive a child into sexual activity in exchange for something the victim needs or wants, and/or for the financial advantage or increased status of the perpetrator or facilitator.

This can involve violent, humiliating and degrading sexual assaults, but does not always involve physical contact and can happen online. For example, young people may be persuaded or forced to share sexually explicit images of themselves, have sexual conversations by text, or take part in sexual activities using a webcam.

Children or young people who are being sexually exploited may not understand that they are being abused. They often trust their abuser and may be tricked into believing they are in a loving, consensual relationship.

If a member of staff suspects CSE, they will discuss this with the DSL. The DSL will trigger the local safeguarding procedures, including a referral to the local authority's children's social care team and the police, if appropriate.

Indicators of sexual exploitation can include a child:

- Appearing with unexplained gifts or new possessions
- Associating with other young people involved in exploitation
- Having older boyfriends or girlfriends
- Suffering from sexually transmitted infections or becoming pregnant
- Displaying inappropriate sexualised behaviour
- Suffering from changes in emotional wellbeing
- Misusing drugs and/or alcohol
- Going missing for periods of time, or regularly coming home late
- Regularly missing school or education, or not taking part in education

Homelessness

Being homeless or being at risk of becoming homeless presents a real risk to a child's welfare.

The DSL and DDSL's will be aware of contact details and referral routes in to the local housing authority so they can raise/progress concerns at the earliest opportunity (where appropriate and in accordance with local procedures).

Where a child has been harmed or is at risk of harm, the DSL will also make a referral to children's social care.

Safeguarding and promoting the welfare of children is everyone's responsibility.

So-called 'honour-based' violence (including FGM and forced marriage)

So-called 'honour-based' violence (HBV) encompasses incidents or crimes committed to protect or defend the honour of the family and/or community, including FGM, forced marriage, and practices such as breast ironing.

Abuse committed in this context often involves a wider network of family or community pressure and can include multiple perpetrators.

All forms of HBV are abuse and will be handled and escalated as such. All staff will be alert to the possibility of a child being at risk of HBV or already having suffered it. If staff have a concern, they will speak to the DSL, who will activate local safeguarding procedures.

FGM

The DSL will make sure that staff have access to appropriate training to equip them to be alert to children affected by FGM or at risk of FGM.

Section 7.3 of this policy sets out the procedures to be followed if a staff member discovers that an act of FGM appears to have been carried out or suspects that a pupil is at risk of FGM.

Indicators that FGM has already occurred include:

- A pupil confiding in a professional that FGM has taken place
- A mother/family member disclosing that FGM has been carried out
- A family/pupil already being known to social services in relation to other safeguarding issues

A girl:

- Having difficulty walking, sitting or standing, or looking uncomfortable
- Finding it hard to sit still for long periods of time (where this was not a problem previously)
- Spending longer than normal in the bathroom or toilet due to difficulties urinating
- Having frequent urinary, menstrual or stomach problems
- Avoiding physical exercise or missing PE
- Being repeatedly absent from school, or absent for a prolonged period
- Demonstrating increased emotional and psychological needs – for example, withdrawal or depression, or significant change in behaviour
- Being reluctant to undergo any medical examinations
- Asking for help, but not being explicit about the problem
- Talking about pain or discomfort between her legs

Safeguarding and promoting the welfare of children is everyone's responsibility.

Potential signs that a pupil may be at risk of FGM include:

- The girl's family having a history of practising FGM (this is the biggest risk factor to consider)
- FGM being known to be practised in the girl's community or country of origin
- A parent or family member expressing concern that FGM may be carried out
- A family not engaging with professionals (health, education or other) or already being known to social care in relation to other safeguarding issues

A girl:

- Having a mother, older sibling or cousin who has undergone FGM
- Having limited level of integration within UK society
- Confiding to a professional that she is to have a "special procedure" or to attend a special occasion to "become a woman"
- Talking about a long holiday to her country of origin or another country where the practice is prevalent, or parents stating that they or a relative will take the girl out of the country for a prolonged period
- Requesting help from a teacher or another adult because she is aware or suspects that she is at immediate risk of FGM
- Talking about FGM in conversation – for example, a girl may tell other children about it (although it is important to take into account the context of the discussion)
- Being unexpectedly absent from school
- Having sections missing from her 'red book' (child health record) and/or attending a travel clinic or equivalent for vaccinations/anti-malarial medication

The above indicators and risk factors are not intended to be exhaustive.

Forced marriage

Forcing a person into marriage is a crime. A forced marriage is one entered into without the full and free consent of one or both parties and where violence, threats, or any other form of coercion is used to cause a person to enter into a marriage. Threats can be physical or emotional and psychological.

Staff will receive training around forced marriage and the presenting symptoms. We are aware of the 'one chance' rule, i.e. we may only have one chance to speak to the potential victim and only one chance to save them.

Safeguarding and promoting the welfare of children is everyone's responsibility.

If a member of staff suspects that a pupil is being forced into marriage, they will speak to the pupil about their concerns in a secure and private place. They will then report this to the DSL.

The DSL will:

- Speak to the pupil about the concerns in a secure and private place
- Activate the local safeguarding procedures and refer the case to the local authority's designated officer
- Seek advice from the Forced Marriage Unit on 020 7008 0151 or fmf@fco.gov.uk
- Refer the pupil to an education welfare officer, pastoral tutor, learning mentor, or school counsellor, as appropriate

Preventing radicalisation

Radicalisation refers to the process by which a person comes to support terrorism and forms of extremism. Extremism is vocal or active opposition to fundamental British values, such as democracy, the rule of law, individual liberty, and mutual respect and tolerance of different faiths and beliefs.

Schools have a duty to prevent children from being drawn into terrorism. The DSL will undertake Prevent awareness training and make sure that staff have access to appropriate training to equip them to identify children at risk.

We will assess the risk of children in our school being drawn into terrorism. This assessment will be based on an understanding of the potential risk in our local area, in collaboration with our local safeguarding partners and local police force.

We will ensure that suitable internet filtering is in place and equip our pupils to stay safe online at school and at home.

There is no single way of identifying an individual who is likely to be susceptible to an extremist ideology. Radicalisation can occur quickly or over a long period.

Staff will be alert to changes in pupils' behaviour.

The government website [Educate Against Hate](https://www.gov.uk/government/collections/educate-against-hate) and charity [NSPCC](https://www.nspcc.org.uk) say that signs that a pupil is being radicalised can include:

- Refusal to engage with, or becoming abusive to, peers who are different from themselves
- Becoming susceptible to conspiracy theories and feelings of persecution
- Changes in friendship groups and appearance
- Rejecting activities they used to enjoy
- Converting to a new religion
- Isolating themselves from family and friends
- Talking as if from a scripted speech
- An unwillingness or inability to discuss their views

Safeguarding and promoting the welfare of children is everyone's responsibility.

- A sudden disrespectful attitude towards others
- Increased levels of anger
- Increased secretiveness, especially around internet use
- Expressions of sympathy for extremist ideologies and groups, or justification of their actions
- Accessing extremist material online, including on Facebook or Twitter
- Possessing extremist literature
- Being in contact with extremist recruiters and joining, or seeking to join, extremist organisations

Children who are at risk of radicalisation may have low self-esteem, or be victims of bullying or discrimination. It is important to note that these signs can also be part of normal teenage behaviour – staff should have confidence in their instincts and seek advice if something feels wrong.

If staff are concerned about a pupil, they will follow our procedures set out in section 7.5 of this policy, including discussing their concerns with the DSL.

Staff should **always** take action if they are worried.

Further information on the school's measures to prevent radicalisation are set out in other school policies and procedures, including the behavior policy and online safety policy.

Domestic Abuse

Old Bank Academy understands that the cross-government definition of domestic abuse and abuse is

- Any incident or pattern of incidents of controlling, coercive, threatening behaviour, violence or abuse between those aged 16 or over who are, or have been, intimate partners or family members regardless of gender or sexuality
- The abuse can encompass, but is not limited to psychological, physical, sexual, financial, emotional harm
- Controlling behaviour is a range of acts designed to make a person subordinate and/or dependent by isolating them from sources of support, exploiting their resources and capacities for personal gain, depriving them of the means needed for independence, resistance and escape and regulating their everyday behaviour
- Coercive behaviour is an act or a pattern of acts of assault, threats, humiliation and intimidation or other abuse that is used to harm, punish, or frighten their victim if this school do identify children for whom domestic abuse may be a concern they will apply the usual referral process and child protection procedures and pass this information to the designated safeguarding lead (DSL). The DSL



Safeguarding and promoting the welfare of children is everyone's responsibility.

can then refer cases where relevant to Kirklees duty and advice team (DAAT). Where DV Notifications are received from DAAT, this information will be added to a pupils chronology and child protection record to ensure that appropriate support can be provided where necessary

Old Bank Academy is aware of and follow the [Kirklees Joint Agency protocol for domestic violence and abuse – \(Operation Encompass School notification\)](#) contact numbers for this must be kept updated by emailing Education.safeguardingteam@kirklees.gov.uk

Checking the identity and suitability of visitors

All visitors will be required to verify their identity to the satisfaction of staff and to leave their belongings, including their mobile phone(s), in a safe place during their visit.

If the visitor is unknown to the setting, we will check their credentials and reason for visiting before allowing them to enter the setting. Visitors should be ready to produce identification.

Visitors the electronic sign in system and wear a visitor's badge.

Visitors to the school who are visiting for a professional purpose, such as educational psychologists and school improvement officers, will be asked to show photo ID and:

- Will be asked to show their DBS certificate, which will be checked alongside their photo ID; or
- The organisation sending the professional, such as the LA or educational psychology service, will provide prior written confirmation that an enhanced DBS check with barred list information has been carried out

All other visitors, including visiting speakers, will be accompanied by a member of staff at all times. We will not invite into the school any speaker who is known to disseminate extremist views, and will carry out appropriate checks to ensure that any individual or organisation using school facilities is not seeking to disseminate extremist views or radicalise pupils or staff.

Non-collection of children

If a child is not collected at the end of the session/day, we will:

- Staff will supervise the child in school until contact can be made and the child is collected
- Phone and text the parent
- Phone and text all three contacts on file
- Contact any other agencies involved with the family
- A member of staff will visit the home to establish contact
- Contact Duty and Advice



Safeguarding and promoting the welfare of children is everyone's responsibility.

- › Contact the police
- › The incident will be recorded on CPOMS

Missing pupils

Our procedures are designed to ensure that a missing child is found and returned to effective supervision as soon as possible. If a child goes missing we will:

- › Search the building and surrounding area
- › Contact parents
- › Report to 101
- › Liaise with all agencies
- › Record the incident on CPOMS

KCSIE 2020:

Annex A: Further safeguarding information Pages 82-96

Annex B: Role of the designated safeguarding lead Pages 97-101

Annex C: Online safety Pages 102-106

Annex E: Host families - homestay during exchange visits Pages 108-110

Annex F: Statutory guidance - Regulated activity (children) - Supervision of activity with children which is regulated activity when unsupervised Pages 111-113

Annex G: Disclosure and Barring Service checks Pages 114-118.